



Virginia Healthcare Workforce Briefs

Indicators from the Bureau of Labor Statistics'
Current Employment Statistics Survey
Series 2: Regional & Sectoral Employment

Series 2, Issue 140

November 2023

Inside this Brief:

Regional Employment	2
Regional Employment Growth	2
Subsector Employment	3
Subsector Employment Growth	4
Region Map	5
About the Data	6

Highlights

- ◆ Data in this series are not seasonally adjusted and exhibit short-term volatility from fluctuations in holidays, weekends, weather and other seasonal factors. Estimates for the most recent month are preliminary.
- ◆ Northern Virginia's Health Care & Social Assistance (HC&SA) sector enjoyed its sixth consecutive month of positive employment growth after creating 3,100 new jobs in October, a gain that translates into a 26.4% annualized growth rate. At the same time, the Rest of Virginia produced 1,400 new HC&SA jobs in October, while Richmond increased HC&SA employment by 1,200 during the month. On the other hand, Hampton Roads' HC&SA sector lost 300 jobs in October.
- ◆ Ambulatory Health Care Services enjoyed its largest monthly employment gain in two years after creating 2,800 new jobs in October, which translates into a 16.8% annualized growth rate. Social Assistance experienced even faster employment growth in October thanks to the creation of 1,600 new jobs, which represents a one-month annualized growth rate of 27.5%. Meanwhile, Nursing & Residential Care Facilities and Hospitals increased employment by 600 and 400, respectively, during the month.

Data in this report are not seasonally adjusted. Self-employed persons, including health professionals in private practice, are not included.

Data in Brief

Not Seasonally Adjusted*	Employment, in Thousands				Growth Rate, Annualized		
	Oct. 2022	July 2023	Sept. 2023	Oct. 2023	12 Month	3 Month	1 Month
Virginia							
Total Nonfarm	4,127.5	4,147.1	4,159.4	4,185.1	1.4%	3.7%	7.7%
Health Care & Social Assistance	467.9	478.3	481.9	487.3	4.1%	7.7%	14.3%
Hampton Roads							
Total Nonfarm	793.7	799.5	795.2	798.9	0.7%	-0.3%	5.7%
Health Care & Social Assistance	97.3	100.0	101.2	100.9	3.7%	3.6%	-3.5%
Northern Virginia							
Total Nonfarm	1,558.9	1,570.0	1,569.2	1,577.9	1.2%	2.0%	6.9%
Health Care & Social Assistance	151.0	153.5	157.4	160.5	6.3%	19.5%	26.4%
Richmond							
Total Nonfarm	705.0	715.9	713.7	718.6	1.9%	1.5%	8.6%
Health Care & Social Assistance	85.4	85.4	84.9	86.1	0.8%	3.3%	18.3%
Rest of Virginia							
Total Nonfarm	1,069.9	1,061.7	1,081.3	1,089.7	1.9%	11.0%	9.7%
Health Care & Social Assistance	134.2	139.4	138.4	139.8	4.2%	1.2%	12.8%

Preliminary estimates are italicized

* Seasonally adjusted data are adjusted by the Bureau of Labor Statistics to account for weather and other seasonal changes. Since the U.S. Bureau of Labor Statistics does not provide seasonally adjusted data at this level, this series uses **non**-seasonally adjusted data exclusively. Seasonal variation may account for some of the variation in time series data. When comparing data in this series to other HWDC series or other publications, it is important to note whether the data reported have been seasonally adjusted.

Regional HC&SA Employment Growth, Level

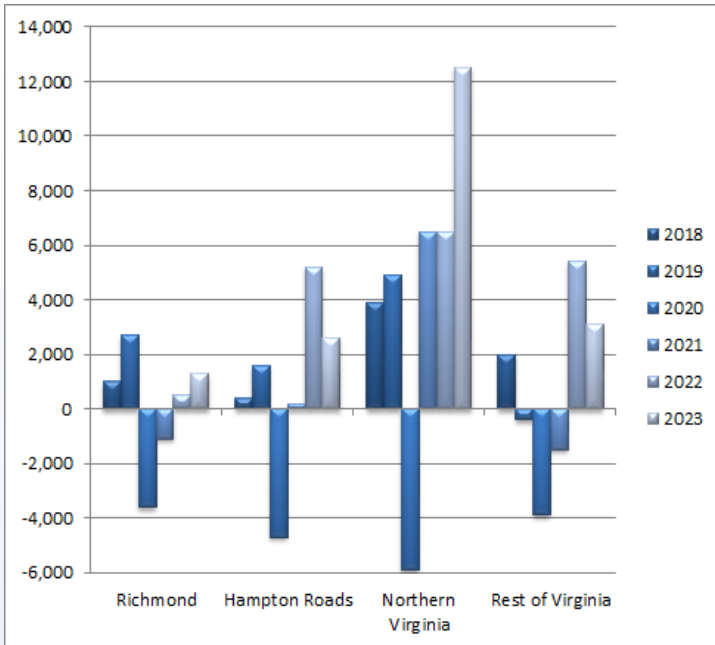


Figure 1: Annual & YTD Change in HC&SA Regional Employment (Not Seasonally Adjusted, Full-Year Change for 2018-2022, Year-to-Date Change for 2023).

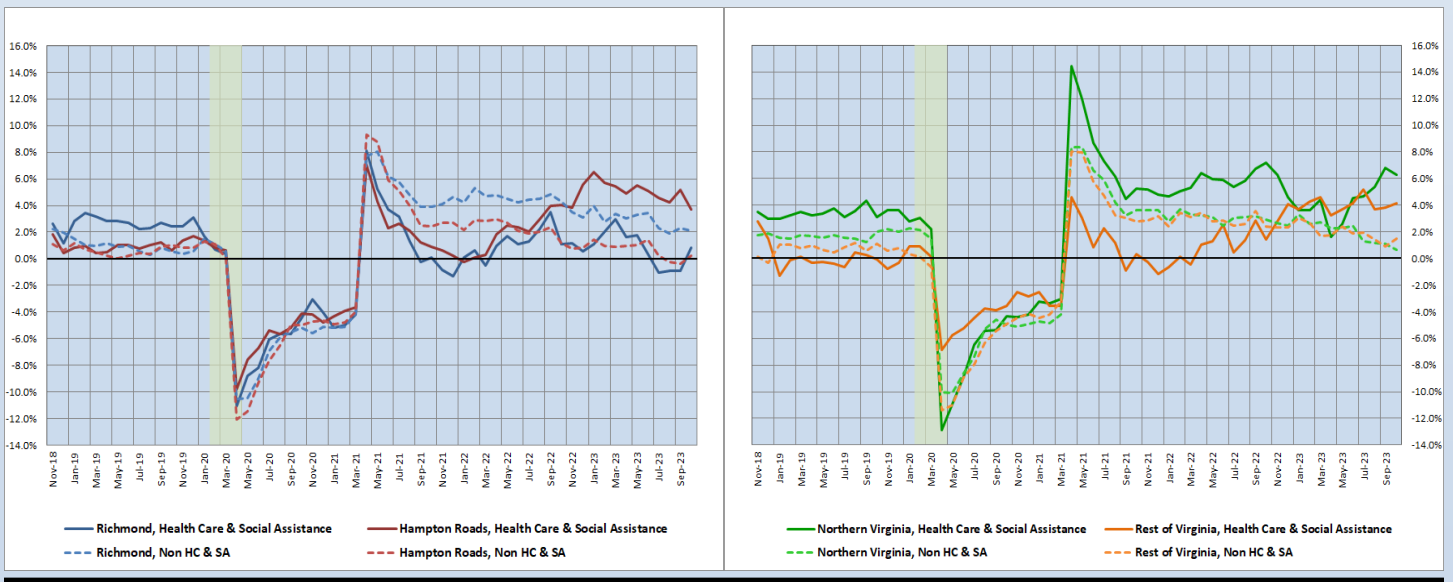
According to the preliminary data released on Friday, November 17, 2023, by the U.S. Department of Labor, Bureau of Labor Statistics, Northern Virginia’s Health Care & Social Assistance (HC&SA) job market remains robust. In fact, Northern Virginia’s HC&SA sector enjoyed its largest monthly employment gain in one year after producing 3,100 new jobs in October, which translates into a 26.4% annualized growth rate. In addition, this result also represents the sixth consecutive month in which HC&SA employment in Northern Virginia has increased. So far this year, Northern Virginia has increased HC&SA employment by 12,500.

Both the Rest of Virginia and Richmond also enjoyed very strong HC&SA job growth during the month. The Rest of Virginia created 1,400 new HC&SA jobs in October, a gain that represents a one-month annualized employment growth rate of 12.8%. At the same time, Richmond’s HC&SA sector added 1,200 new jobs, which translates into an even stronger 18.3% annualized growth rate. As for Hampton Roads, its HC&SA sector lost 300 jobs during the month.

Year-Over-Year Regional Employment Growth

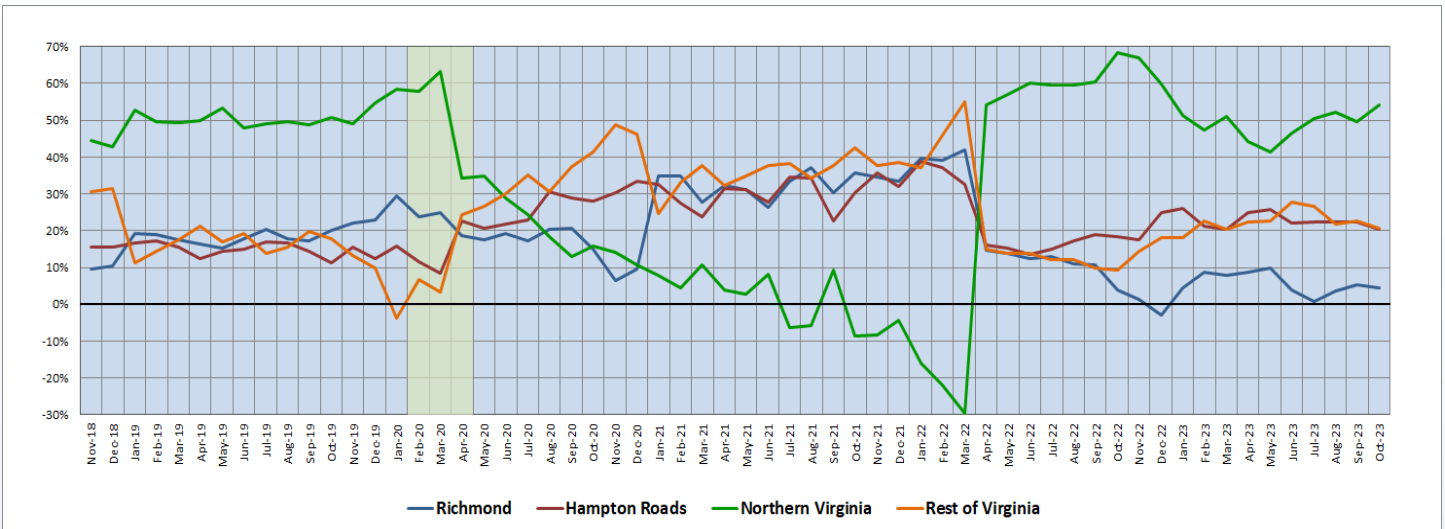
Even with October’s impressive job gain, Northern Virginia’s year-over-year HC&SA employment growth rate fell from 6.78% to 6.29% during the month. Despite this decline, Northern Virginia’s HC&SA sector still enjoys the fastest year-over-year HC&SA employment growth rate in the state. Meanwhile, the Rest of Virginia saw its year-over-year HC&SA employment growth rate increase from 3.83% to 4.17% in October. As for Richmond, its year-over-year HC&SA employment growth rate turned positive for the first time since June after increasing from -0.93% to 0.82% during the month. Finally, Hampton Roads’ year-over-year HC&SA employment growth rate fell from 5.20% to 3.70% in October.

Figure 2: Year-Over-Year Employment Growth (Not Seasonally Adjusted).



Regional Share of 24-Month Employment Growth

Figure 3: Regional Share of Previous 24-Month Employment Growth in Virginia’s HC&SA Sector (Not Seasonally Adjusted).



Northern Virginia saw its 24-month HC&SA employment growth share increase from 49.61% to 54.29% in October. With this increase, Northern Virginia’s 24-month HC&SA employment growth share has reached its highest level so far this year. On the other hand, both the Rest of Virginia and Hampton Roads experienced very similar declines to their respective 24-month HC&SA employment growth shares in October. The Rest of Virginia saw its 24-month HC&SA employment growth share decline from 22.62% to 20.78%, while the comparable growth share for Hampton Roads fell from 22.37% to 20.50%. With these declines, both of these growth shares have now fallen to their lowest values since March. As for Richmond’s HC&SA sector, its 24-month employment growth share fell from 5.40% to 4.43% in October.

HC&SA Subsector Employment Growth, Level

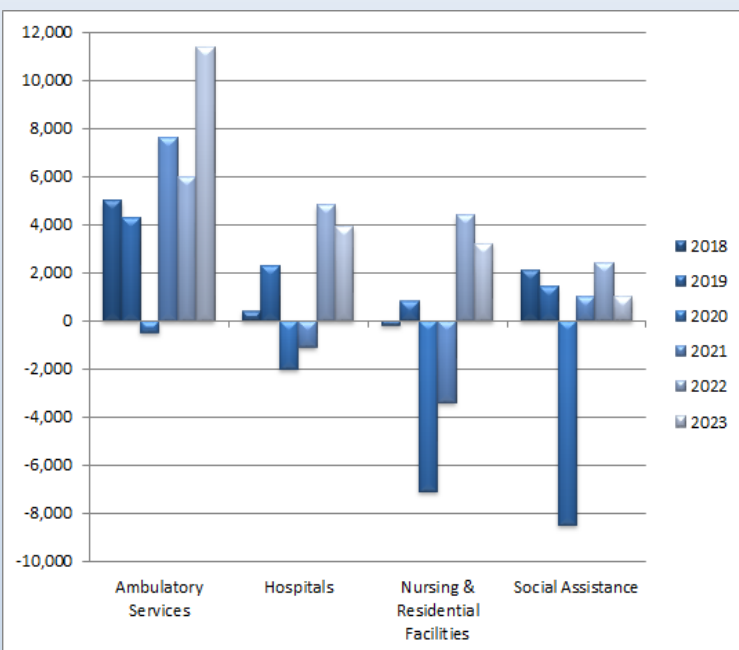


Figure 4: Annual & YTD Change in HC&SA Subsector Employment (Not Seasonally Adjusted, Full-Year Change for 2018-2022, Year-to-Date Change for 2023).

For the first time since February, all four of Virginia’s HC&SA subsectors increased employment in the same month. Ambulatory Health Care Services produced the largest employment gain in October with the creation of 2,800 new jobs during the month. This result represents the largest monthly job gain in Ambulatory Health Care Services since May. With this job gain, Ambulatory Health Care Services have now enjoyed nine consecutive months of positive employment growth. Thanks to these consistently solid job gains, Ambulatory Health Care Services are experiencing their strongest year of employment growth in more than one decade: So far in 2023, this HC&SA subsector has created a total of 11,400 jobs across the state.

Social Assistance also enjoyed very strong employment growth in October thanks to the creation of 1,600 new jobs during the month. Meanwhile, Nursing & Residential Care Facilities and Hospitals increased employment by 600 and 400, respectively, in October. Hospitals have now increased employment in each of the past five months.

Distribution of Growth by Subsector

Not Seasonally Adjusted	Employment, in Thousands				Growth Rate, Annualized		
	Oct. 2022	July 2023	Sept. 2023	Oct. 2023	12 Month	3 Month	1 Month
Virginia							
Health Care & Social Assistance	467.9	478.3	481.9	487.3	4.1%	7.7%	14.3%
<i>Ambulatory Health Care Services</i>	206.5	212.7	214.7	217.5	5.3%	9.3%	16.8%
<i>Hospitals</i>	109.8	112.3	113.6	114.0	3.8%	6.2%	4.3%
<i>Nursing & Residential Care Facilities</i>	71.8	75.6	75.3	75.9	5.7%	1.6%	10.0%
<i>Social Assistance</i>	79.8	77.7	78.3	79.9	0.1%	11.8%	27.5%
Hampton Roads							
Health Care & Social Assistance	97.3	100.0	101.2	100.9	3.7%	3.6%	-3.5%
<i>Hospitals</i>	22.4	22.8	23.1	23.1	3.1%	5.4%	0.0%
Northern Virginia							
Health Care & Social Assistance	151.0	153.5	157.4	160.5	6.3%	19.5%	26.4%
<i>Ambulatory Health Care Services</i>	77.4	81.5	82.6	83.7	8.1%	11.2%	17.2%
<i>Hospitals</i>	28.5	28.9	29.3	29.5	3.5%	8.6%	8.5%

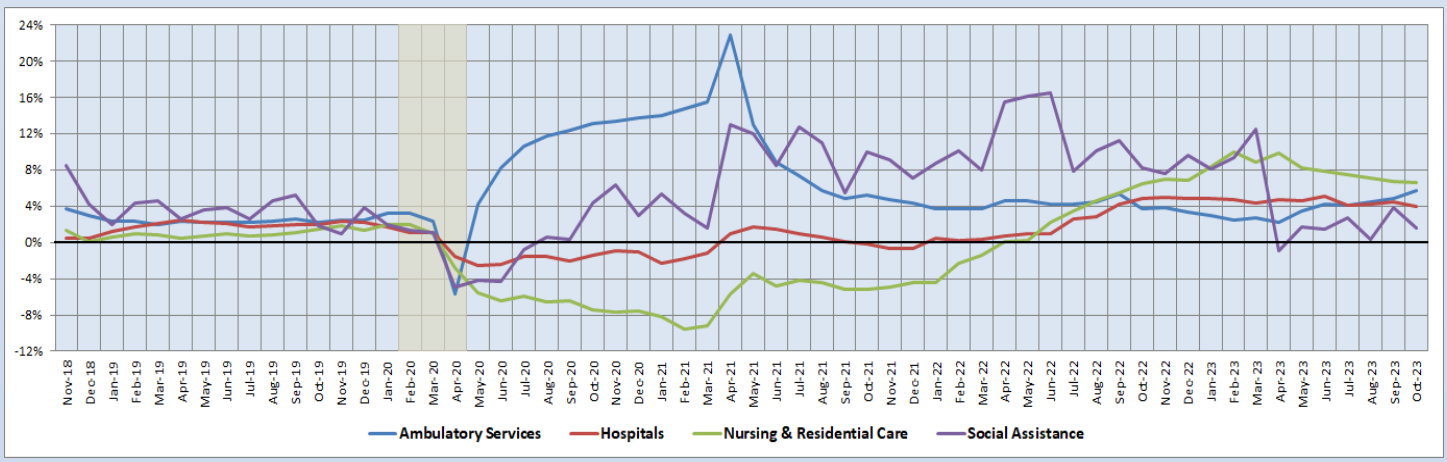
Preliminary estimates are italicized

Social Assistance has enjoyed very strong employment growth in recent months. In October, employment in Social Assistance increased at a 27.5% annualized rate, or nearly double the overall statewide HC&SA average for the month. Its three-month annualized employment growth rate of 11.8% is also well above the overall average for Virginia’s HC&SA sector as a whole. Ambulatory Health Care Services have enjoyed strong job growth over the same time period as well with one- and three-month annualized employment growth rates of 16.8% and 9.3%, respectively. Meanwhile, Nursing & Residential Care Facilities have the fastest long-term job growth in the state with a current 12-month employment growth rate of 5.7%.

12-Month Average Employment Growth by Subsector

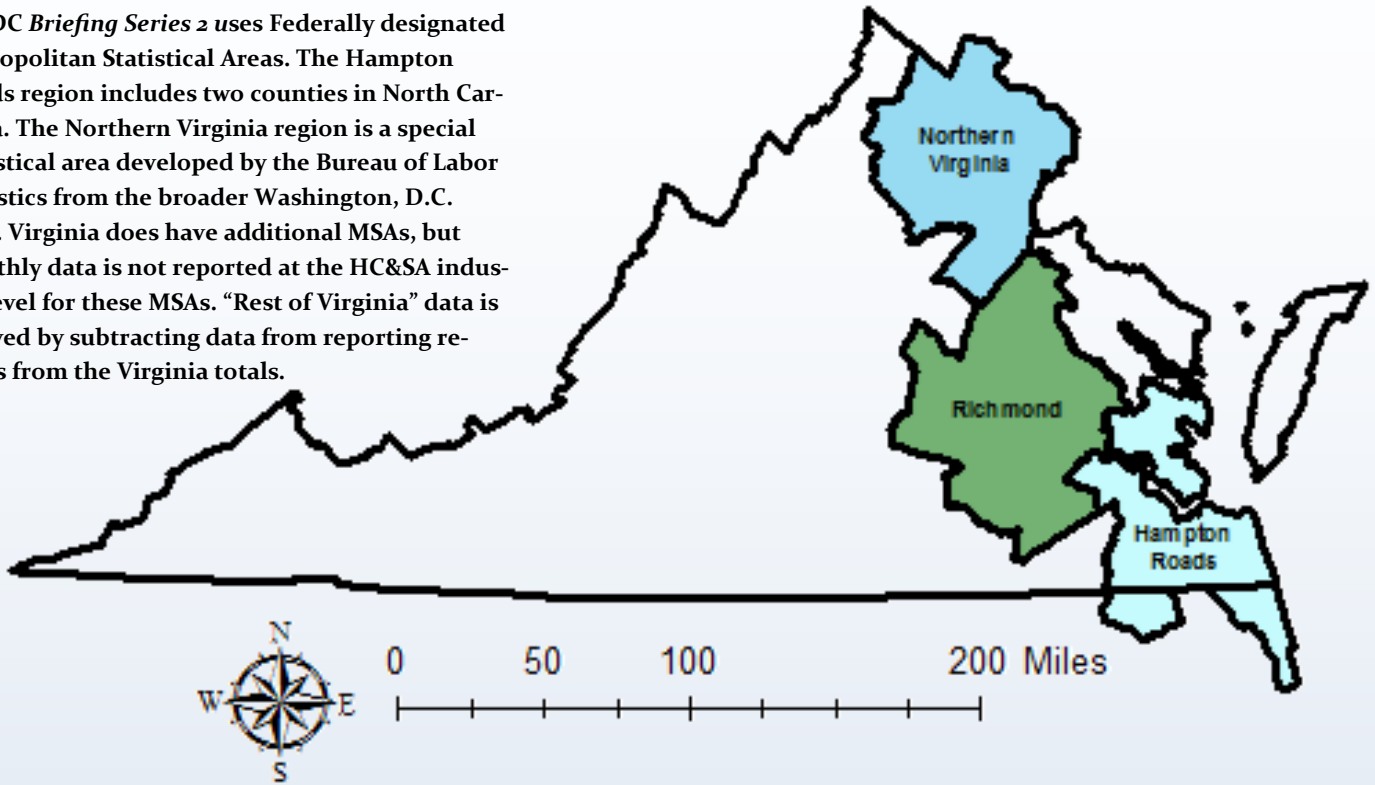
In October, the 12-month employment growth rate moving average of Ambulatory Health Care Services increased from 4.79% to 5.70%, thereby reaching its highest value in more than two years. Meanwhile, Nursing & Residential Care Facilities saw their 12-month employment growth rate moving average drop to a new year-to-date low after falling slightly in October from 6.66% to 6.61%. Likewise, the 12-month employment growth rate moving average of Hospitals also reached a year-to-date low in October with a decline from 4.43% to 3.93%. As for Social Assistance, its 12-month employment growth rate moving average fell by more than half in October from 3.78% to 1.61%.

Figure 5: 12-Month Moving Average, HC&SA Subsector Employment Growth Rate (Not Seasonally Adjusted).



Region Map

HWDC *Briefing Series 2* uses Federally designated Metropolitan Statistical Areas. The Hampton Roads region includes two counties in North Carolina. The Northern Virginia region is a special statistical area developed by the Bureau of Labor Statistics from the broader Washington, D.C. MSA. Virginia does have additional MSAs, but monthly data is not reported at the HC&SA industry level for these MSAs. “Rest of Virginia” data is derived by subtracting data from reporting regions from the Virginia totals.



Region Detail

Northern Virginia		Richmond		Hampton Roads	
<i>Northern Virginia, VA (Non-standard CES Area 94783)</i>		<i>Richmond, VA (MSA 40060)</i>		<i>Virginia Beach-Norfolk-Newport News, VA-NC (MSA 47260)</i>	
Counties:	Cities:	Counties:	Cities:	Counties:	Cities:
Arlington	Alexandria	Amelia	Colonial Heights	Gloucester	Chesapeake
Clarke	Fairfax	Caroline	Hopewell	Isle of Wight	Hampton
Culpeper	Falls Church	Charles City	Petersburg	James City	Newport News
Fairfax	Fredericksburg	Chesterfield	Richmond	Mathews	Norfolk
Fauquier	Manassas	Dinwiddie		Surry	Poquoson
Loudoun	Manassas Park	Goochland		York	Portsmouth
Prince William		Hanover			Suffolk
Rappahannock		Henrico		<i>Currituck, NC</i>	Virginia Beach
Spotsylvania		King William		<i>Gates, NC</i>	Williamsburg
Stafford		New Kent			
Warren		Powhatan			
		Prince George			
		Sussex			

Healthcare Workforce
Data Center

Perimeter Center
9960 Mayland Drive, Suite 300
Henrico, VA 23233-1463

Phone: (804) 597-4213
Fax: (804) 527-4434
E-mail: hwdc@dhp.virginia.gov
Website: www.dhp.virginia.gov/PublicResources/HealthcareWorkforceDataCenter

HWDC Staff:

Yetty Shobo, PhD <i>Director</i>	Barbara Hodgdon, PhD <i>Deputy Director</i>
Rajana Siva, MBA <i>Data Analyst</i>	Christopher Coyle, BA <i>Research Assistant</i>

Follow us on. . .

Tumblr: <http://vahwdc.tumblr.com/>

About the Data

Data in this report are from the U.S. Department of Labor, Bureau of Labor Statistics' Current Employment Statistics program. The CES program surveys about 143,000 businesses and government agencies monthly. Unless otherwise noted, this series uses data that are not seasonally adjusted. Seasonal variations related to weather, holidays, weekends, seasons and other predictable variations are apparent in the data. Short-term changes may be related to seasonal changes rather than underlying trends. Data from recent months are preliminary and subject to revision in future releases from the CES. Revisions will be reported in future editions of this series. Unless otherwise noted, the CES data presented in this series:

Includes:

- ◆ Data on employed individuals drawing a paycheck (payroll employees).
- ◆ All employees, regardless of role, occupation or hours worked.
- ◆ HC&SA employees in the private sector only.
- ◆ Persons employed by health professionals in private practice.
- ◆ Both government and private sector workers in nonfarm employment data.

Does not include:

- ◆ Self-employed workers or volunteers, including health professionals in private practice.
- ◆ HC&SA employees in the public sector (These are counted as government workers in monthly reports).
- ◆ Information on hours worked or the quality of employment.
- ◆ Government workers in HC&SA level data (Government workers, regardless of occupation and role, are classified as public sector employees).

The Department of Health Professions' Healthcare Workforce Data Center works to improve the data collection and measurement of Virginia's healthcare workforce through regular assessment of workforce supply and demand issues among the 80 professions and 350,000 practitioners licensed in Virginia by the DHP.

The HWDC collects data on Virginia's licensed health professionals through surveys completed during the online license renewal and application process. Survey results and data may be accessed on our website: www.dhp.virginia.gov/PublicResources/HealthcareWorkforceDataCenter/.

The HWDC also provides a series of Virginia Healthcare Workforce Briefs based on data collected by the U.S. Department of Labor's Bureau of Labor Statistics and the U.S. Department of Commerce's Bureau of Economic Analysis.

Virginia Healthcare Workforce Briefs:

Series 1: State & National Employment (Monthly)

Series 2: Virginia Regional & Sectoral Employment (Monthly)

Series 3: Income & Compensation (Quarterly)